

SquaredUp at scale

SquaredUp is made for enterprises. Deploy SquaredUp as your business dashboarding solution at scale across multiple SCOM management groups for a live, single-pane-of-glass view of your entire monitoring environment.

Never miss a business-critical change again. Bring all your data together in one place and share it easily with everyone.

Use Cases

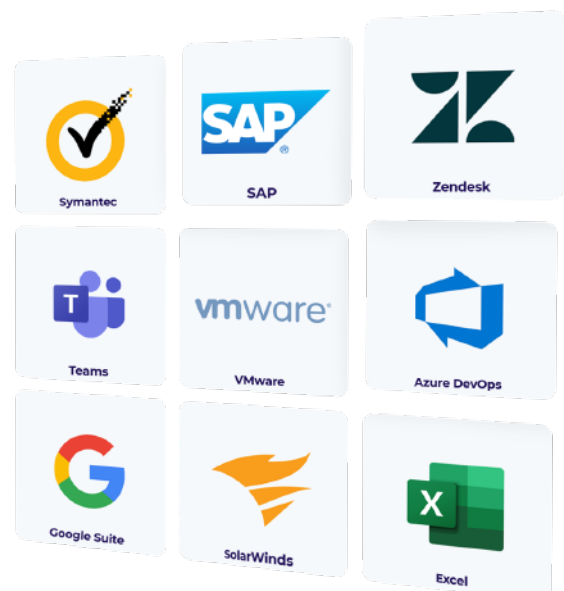


Oversee multiple SCOM management groups

Break down the silos of multiple SCOM deployments with SquaredUp. Get detailed views with drill downs of your whole SCOM monitoring environment so you can find root causes fast. Plus, use Open Access dashboard sharing to combine multiple deployments of SquaredUp into a single 'master' solution. All this with high availability and load balancing across multiple licenses.

Visualize all your tools in one place

Get live, on-demand visibility of your whole monitoring environment, whatever the tools you use. Integrate all your tools into SquaredUp so you can visualize everything. No more silos. And you get high availability so you can trust SquaredUp to run under pressure, so you always have insight into your environment.



Benefits



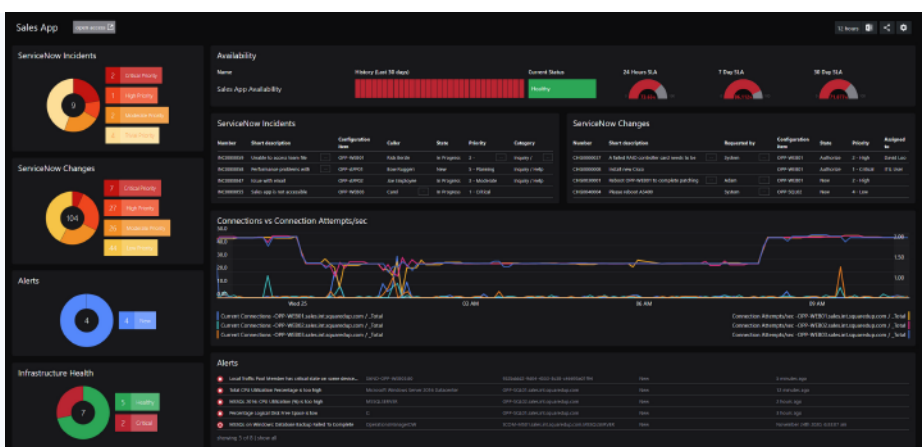
All your data in one place

Bring all your data together from every tool in one place for a complete business dashboarding solution.



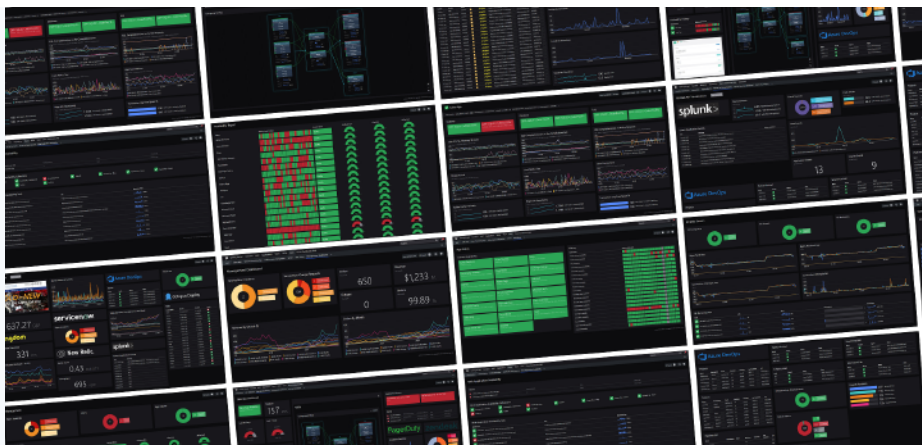
Real-time data

Never miss a change in your data again with real-time visualizations of all your tools and drilldowns into SCOM.



Pressure tested at scale

SquaredUp is built for enterprise use with load balancing and high availability that's been pressure tested for peace of mind.



Exceptional technical support

Our customers tell us we have some of the best support they've ever experienced and we're here for you too.

